

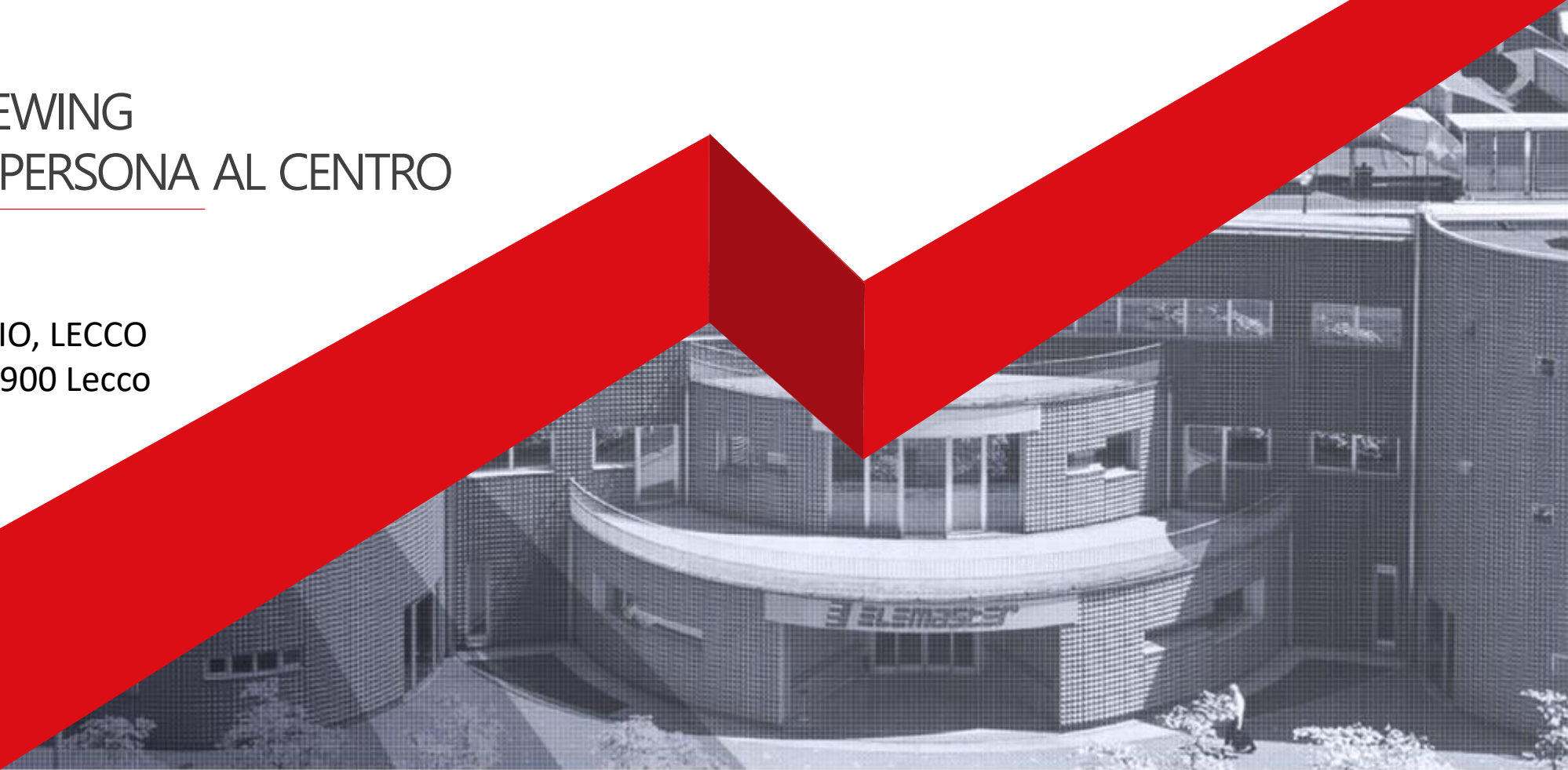


ELECTRONICS
RUNS IN TO THE **FUTURE**

ELEMASTER - REWING
A.I. & CARE: LA PERSONA AL CENTRO

CAMERA di COMMERCIO, LECCO
Viale Tonale, 28/30, 23900 Lecco

21 June 2024

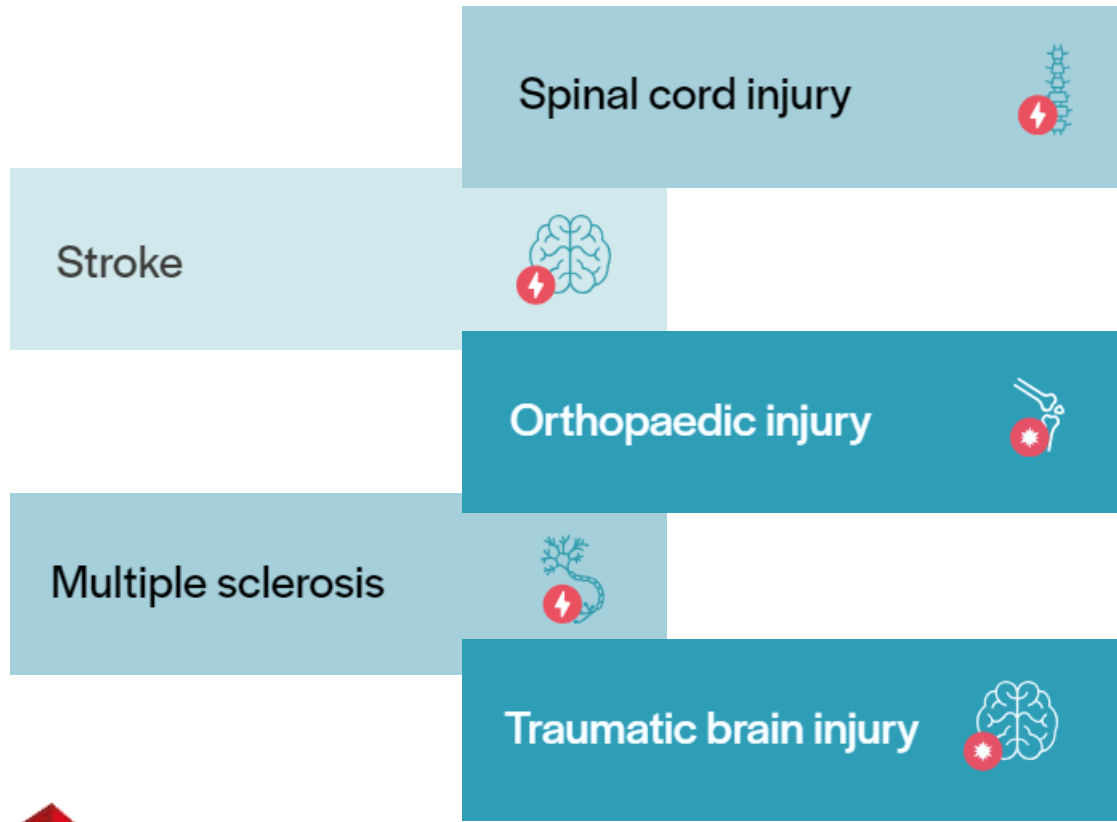


A.I. & CARE: LA PERSONA AL CENTRO INTRODUZIONE

Agenda

- Presentazione Rewing
- Presentazione Eletech & Elemaster
- Descrizione prodotto EDUSA PRO
- Collaborazione REWING – ELEMMASTER
- Conclusione





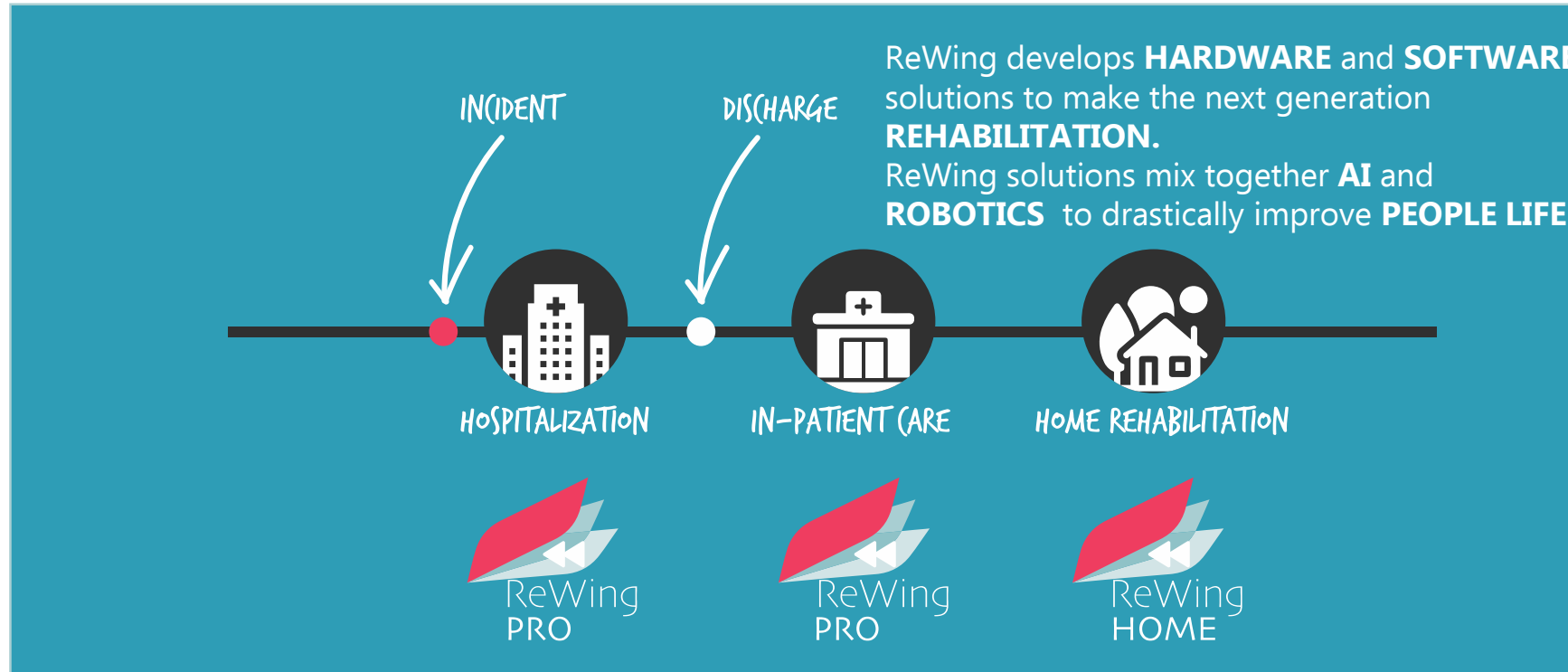
**MORE THAN 150
MILLION PEOPLE
WORLDWIDE
WITH MOTOR
IMPAIRMENTS.**

Due to neurologic or orthopaedic conditions.



60% WITH UPPER LIMB IMPAIRMENTS THAT SEVERELY AFFECT DAILY LIFE ACTIVITIES

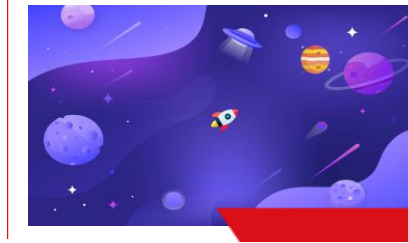
Wrist plays a crucial role in grasping objects, writing, eating, dressing, using tools



SOPHISTICATED HARDWARE



AI-BASED SOFTWARE



- AI algorithms to automatically adapt the therapy to patient's needs
- Neuroplasticity recovery
- Gamification



- Objective and precise functional measurements
- Data-driven treatments
- Reporting and big data

THE FIRST PRODUCT OF THE LINE



-25% COSTS



Director

- **Costs Reduction**
- **Resources Optimization**
- **Revenues Increase (Private)**



Physiotherapist

- **Effort Reduction**
- **Time Optimization**
- **Improved Performance**

+84% EFFECTIVENESS



Patient

- **Improved Recovery**
- **Improved Experience**
- **Improved Reports**





Jacopo
Zenzeri

CEO, Co-founder
Bioengineer PhD



Amel
Cherif

CTO, Co-founder
Bioengineer PhD



Maddalena
Mugnosso

COO, Co-founder
Bioengineer PhD



Marco
Guazzotti

SW Designer



Irene
Pippo

HW Designer



Giulia Aurora
Albanese

Product Specialist

Spin-off of company of
40+ years of experience



Investors



100+ articles published in international journals and conferences

Major expertise in SW and HW development, clinical validation and design of MedTech technologies

THE ELEMMASTER COMPANY

Elemaster is one of the major **EMS** companies in Europe

The **goal** of Elemaster is to help customers by bringing innovative products to market faster and at competitive costs.

Our **research and development department** is the beating heart of the company, managing the entire product life cycle from the initial idea to mass production.



FOUNDED IN 1978
EMPLOYEES WORLDWIDE: 1700



CONSOLIDATED REVENUES
395.000.000 Euro



SPECIALIZED IN
High mix / Low&Mid Volumes



KEY VALUES
Technology, Flexibility, Competitiveness

THE ELEMASTER GLOBAL FOOTPRINT



 Headquarters

 Research & Development

 Manufacturing Centers

 Sales / Service offices

THE ELEMMASTER INTERNATIONAL DESIGN CENTERS

The Design Centers ISO 14001:2015 **develop and certify**, as customers' partners, from requirements to complete embedded platforms, hw, fw, sw, radio frequency, product styling, mechanical engineering all under certified processes:

- ISO 9001:2015 for Industry
- ISO/TS 22163:2017 for Railways
- ISO 13485:2016 for Medical
- Internal laboratory. EMC, climatic, insulation, vibration and shock tests are accredited to the ISO/IEC 17025:2017 standard.

Experiences cover **safety critical design** according to IEC 61508, ISO 13849, EN 50128/9, and IEC 62304. Among safety critical design from SIL0 to SIL4.



Railways & Transport
IRIS ISO/TS 22163:2017



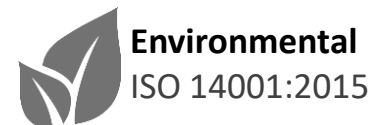
Medical & Healthcare
ISO 13485:2016 - US FDA*
*contract manufacturer



Automation & Energy
ISO 9001:2015



Internal Test Laboratory
EMC, climatic, insulation, vibration and shock tests
accredited ISO/IEC 17025:2017



THE ELEMMASTER INTERNATIONAL DESIGN CENTERS



ELEMMASTER HEADQUARTERS - ITALY

ELETECH Design Center - Lomagna, Italy ELEMMASTER Design Center - Ulm, Germany

Office & Lab area	3000 sq. mt.
No. of Employees	60
Founded	Jan 2000
No. of Projects	650 projects since the beginning



ELEMMASTER - GERMANY

Technologies & Standards

- ISO 14001
- ISO 9001 for Industry
- IRIS ISO/TS 22163 for Railways
- ISO 13485 for Medical
- System on Module
- IoT Platform
- Connectivity (BLE, NFC, LTE)
- High Power architectures
- CPU & High-Speed solutions

Core Skills

- Project & Program Management
- System Engineering
- Hardware Engineering
- Firmware & Software Engineering
- Mechanical Engineering
- Manufacturing Test development
- Industrialization (DFM, DFA, DFT, DTC)
- Quality Engineering
- Quality Assurance
- Safety critical design
- Power Integrity / Signal Integrity
- Simulations

Portfolio of Services

- Full design development (Co-Design, Turn-Key collaboration model)
- Concept architecture development
- PCB Layout Development
- Rapid Prototyping and Testing (NPI Lab)
- Accredited Test Lab (EMC, Safety, Environmental) ISO 17025/ILAC
- Manufacturing Test Development (ICT, FCT, Burn-in, ATE)
- Value Engineering
- Product Maintenance and Sustaining
- Startup boost

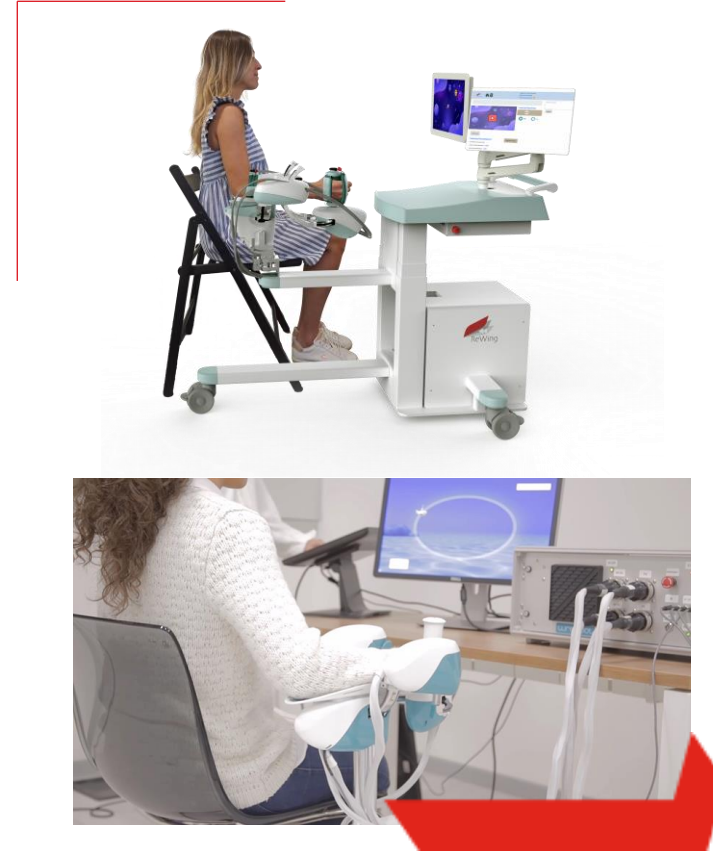
Market\Product Experience

- Railways & Transportation
- Medical & Healthcare
- Industrial Automation
- Automotive
- High-Tech Mobility
- Energy Management
- Space & Defence
- Metering



FROM PROTOTYPE TO PRODUCT

- Co-design for assembly and manufacturing
- Packaging
- Pre-compliance for certification



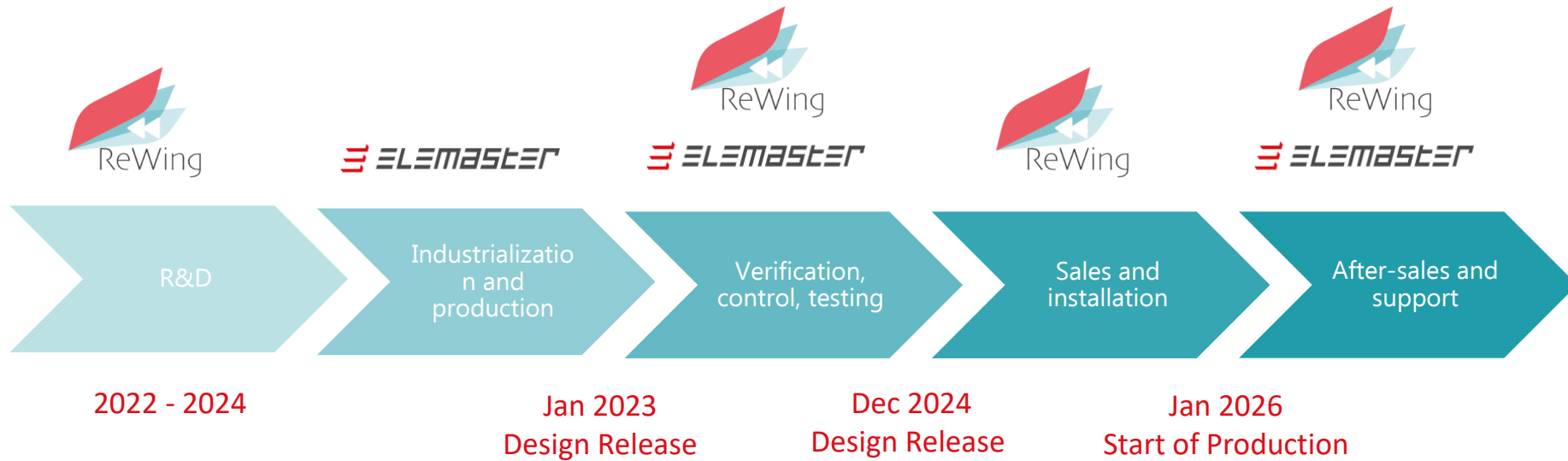
THE COLLABORATION ELEMMASTER & REWING



SW production:
ReWing



HW production:
ELEMMASTER



21st June 2024

THANKS FOR YOUR PARTICIPATION

ELEMASTER - REWING

A.I. & CARE: LA PERSONA AL CENTRO

FOLLOW US



Marco Ferrari
Eletech General Manager

marco.ferrari@eletechsrl.it

+39 334 6121448

Maddalena Mugnosso
COO & Co-Founder Rewing

THE ELEMMASTER STARTUP BOOST - Innovation Framework

